

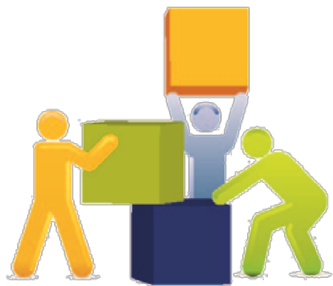


National Centre for Guidance in Education
Lárionad Náisiúnta um Threoir san Oideachas

National Forum on Guidance

Testing the European Resource Kit in the Irish Context

Dr Raimo Vuorinen,
Co-ordinator ELGPN
Jennifer McKenzie
Director, NCGE



**lifelong
guidance**

building the evidence base



EUROPEAN LIFELONG
GUIDANCE POLICY
NETWORK



Lifelong
Learning
Programme



A N R O I N N | D E P A R T M E N T O F
O I D E A C H A I S | E D U C A T I O N
A G U S S C I L E A N N A | A N D S K I L L S



Origins of the Resource Kit

- 2004 OECD and the European Commission handbook for policy makers
- 2004 & 2008 Council Resolutions on LLG
- Collaborative process by members of the ELGPN 2011-12



Themes

- Career Management Skills
- Access including APEL
- Co-operation and co-ordination mechanisms
- Quality assurance and evidence base



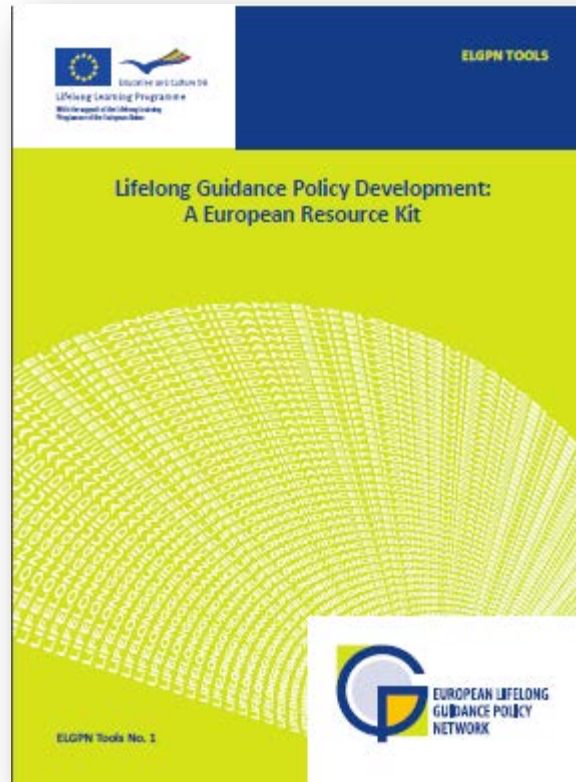
AIM

- To review existing lifelong guidance provision in the country or region
- To identify issues requiring attention and gaps that need to be filled drawing from practices from other European countries



Goals of the ELGPN 2013-14:

- To promote the adaptation, field testing and application of the ELGPN Resource Kit at member-country level.
- Mutual learning
- **Building national evidence-base through EU-level co-operation!**



Lifelong Guidance Policy Development: A European Resource Kit



NATIONAL FORUM
ON GUIDANCE

FÓRAM NÁISIÚNTA
UM THREOIR



- **National Forum on Guidance
2013 – 2014**
- **Co-ordinated by NCGE on behalf of DES**
- **Invited Representative Subgroup
DSP / IGC / AEGAI / AHECS / DSGC**



Testing the Resource Kit

Aim to test in:

- Higher Education Career Services
- Adult Educational Guidance Services
- Post primary schools
- In conjunction with Dept. Social Protection
- Other Members of the National Forum



Focusing ...

Within guidance sectors on:

- Quality Assurance and Evidence Based Practice
- Career Management Skills

Within the wider Forum on

Access , Co-operation and Co-ordination





3 Questions

1. What are the 3 key points to consider when testing the European Resource Kit in the Irish Context ?
2. How will the Testing the “Resource Kit” support us to develop an evidence base for guidance?
3. What do you see are the possible outcomes of testing the “Resource Kit” in the Irish Context?



National Centre *for* Guidance in Education
Lárionad Náisiúnta um Threoir san Oideachas

Thank You for your participation!



**lifelong
guidance**

building the evidence base



Lifelong
Learning
Programme



A N R O I N N | DEPARTMENT OF
OIDEACHAIS | EDUCATION
AGUS SCILEANNA | AND SKILLS